

Monoclonal anti GAPDH

ORDERING INFORMATION

Catalog Number:	iAP-0005
Size:	100 µg
Storage:	<-20 °C
Immunogen:	Recombinant GAPDH
Clone Name:	GA1R
Ig Type:	Mouse IgG1
Purification:	Antigen A affinity purified
Application:	Dot Blot, ELISA, IS, and WB

Preparation:

This antibody was produced from a hybridoma (mouse myeloma fused with spleen cells from a mouse immunized with Recombinant GAPDH).

Formulation and Storage:

Protein A affinity chromatography from mouse ascites fluid. The product was lyophilized from a 0.2 µm filtered solution in phosphate-buffered saline (PBS). Lyophilized samples are stable for 2 years from date of receipt when stored at -70°C.

Reconstitution:

Reconstitute the antibody with 100 µl sterile H₂O and the final concentration is 1000µg/ml. Reconstituted antibody can also be aliquoted and stored frozen at < -20 °C for at least for six months without detectable loss of activity. **Avoid repeated freeze-thaw cycles.**

Specificity:

Recognizes native and denatured forms of GAPDH (~37kDa) from BL-21 bacteria, Sf9 insect, Saccharomyces cerevisiae (yeast), human, mouse, rat, rabbit, chicken, and hamster. GAPDH from other species may also be detectable

Applications:

This antibody is suitable for following applications: Dot Blot, ELISA, IS, and WB (1:1000-10,000)

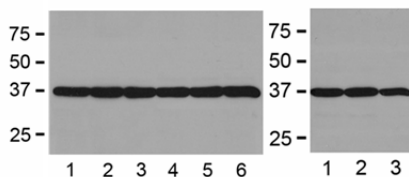


Fig. LEFT: 1:2000 (0.5µg/mL) Ab dilution used in WB of 5µg/lane tissue lysates from human (1), mouse (2), rat (3), rabbit (4), chicken (5), and hamster (6). RIGHT: WB from BL-21 bacteria (1), Sf9 insect (2), and Saccharomyces cerevisiae (3)

Optimal dilutions should be determined by each laboratory for each application.

The listed dilutions are for recommendation only and the final conditions should be optimized by the ender users!

This product is sold for Research Use Only !